

# Pen Maintenance & Purging



## Contents

Purging the Osprey Print Head .....	4
Changing the Ink Osprey Print System .....	10
Preparing the Osprey Print Head for Storage.....	15

# Section One

## Purging



## Purging the Osprey Print Head

The following is information specifically about the Osprey Print Head Pin Maintenance and Purging the Osprey Print Head.

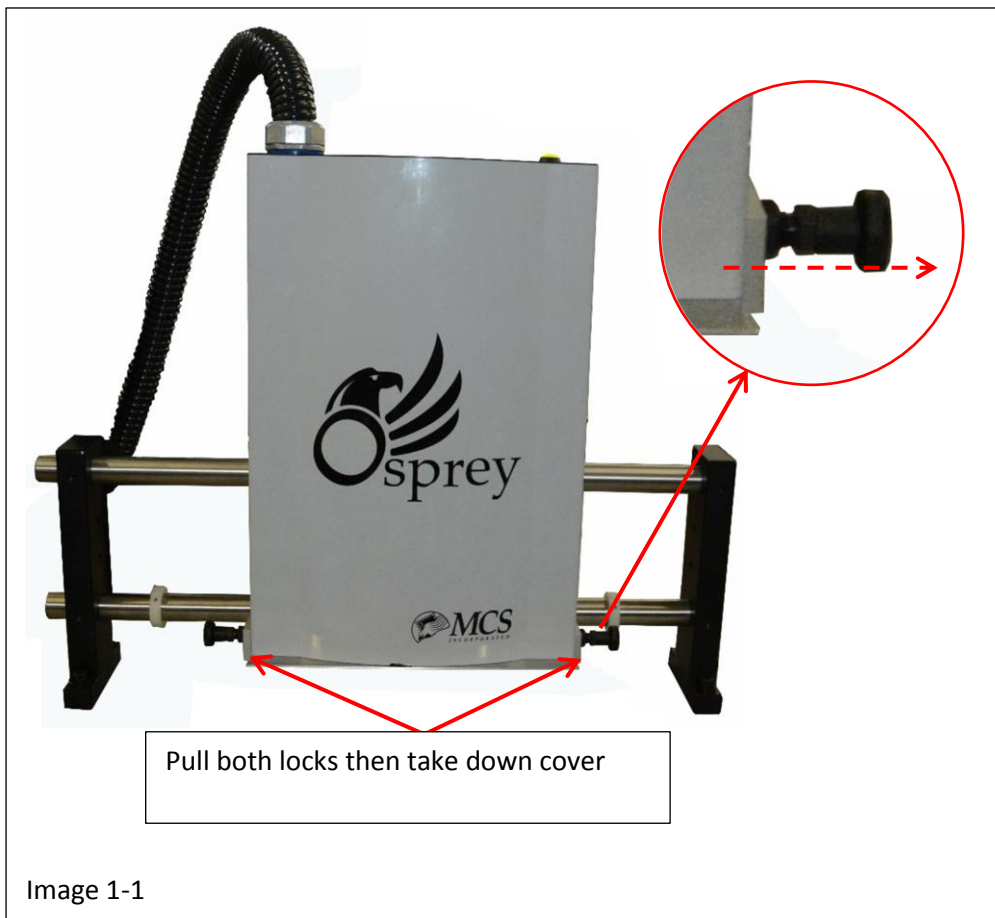
With the system is powered up, it will be necessary to purge the Osprey Print Head by perform the following:

### Step 1

Raise the Print Head and remove the cover in the following manner:

- A. Raise the Osprey Print head to its highest setting by pulling out the lock knob, manually lifting the Osprey Print Head and pushing the lock knob to its original position.
- B. Remove the cover on the bottom in the following manner:
  - B-a. Pull both retaining lock knobs out from the head at the same time
  - B-b. Once the locks are out of the head pull the cover down and away from the head and set the cover aside see image 1-1.
- C. Place a Purge Tray under the Osprey Print Head.

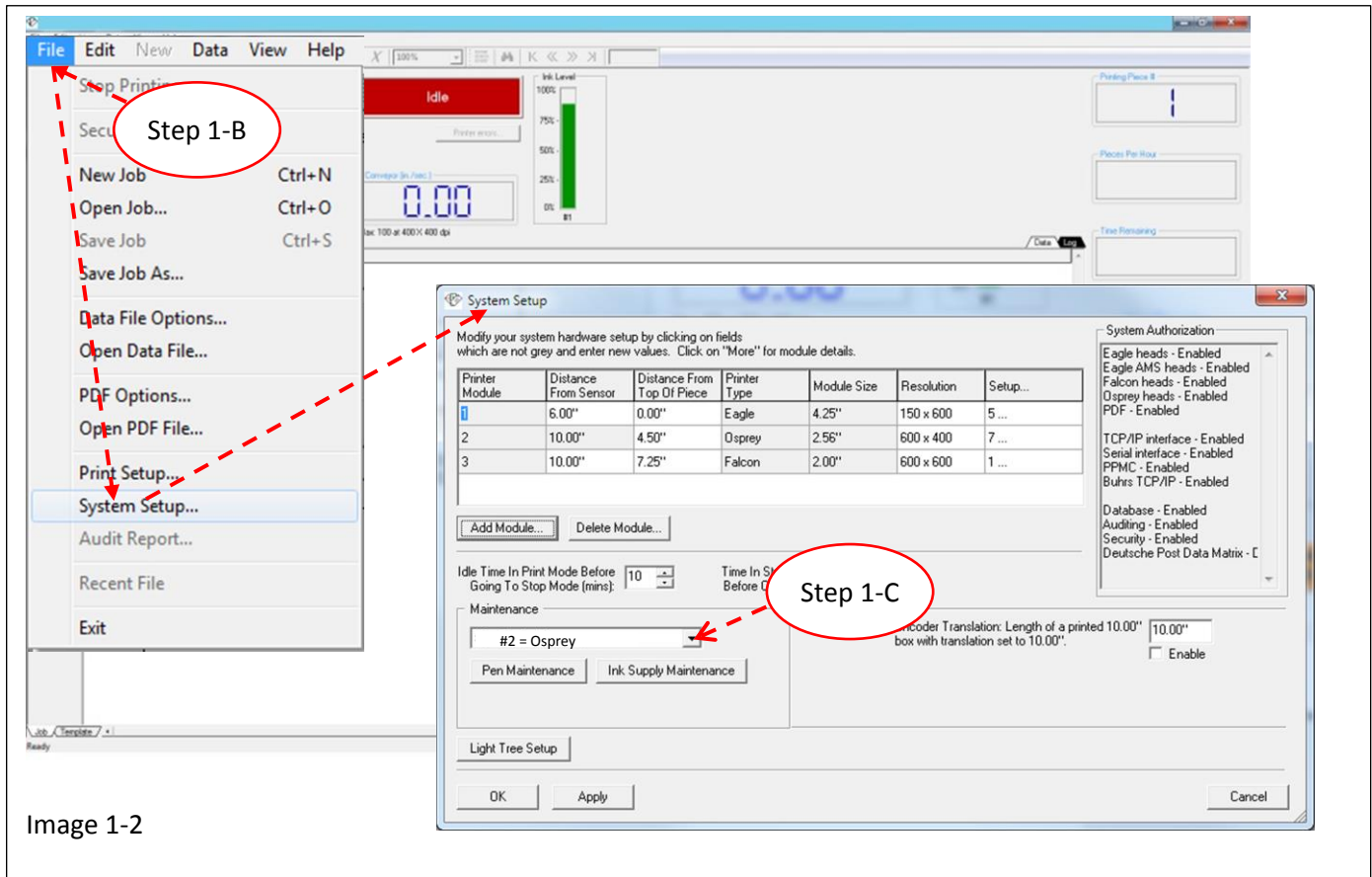
Special Note: If the Purge duration is set equal to or less than 3 seconds (refer to Step 2-E, setting the purge duration), use of a purge tray may not be necessary. Simply hold a Kimwipe under the pens (**Not Touching the Pens**) and press the yellow purge button on the print head.

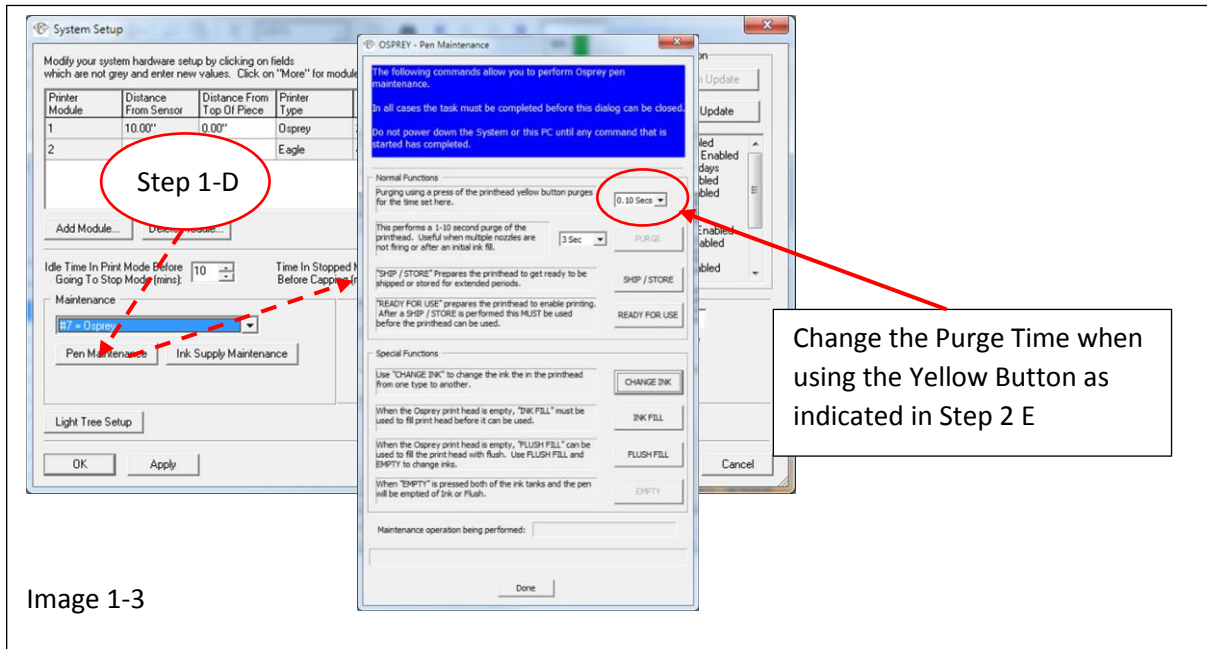


## Step 2

Run the Raptor 6 Software and set the purge time by performing the following:

- A. Bring the Raptor 6 Software on line. (Purge time duration can be set for best performance in the “Osprey Pin Maintenance Menu”)
- B. In the Main Menu press File > System >> Setup, to open the System Setup Menu see image
- C. In the “Maintenance” section of the System Setup Menu, Select “Osprey” see image 1-2
- D. Press “Pen Maintenance” to open the menu shown in image 1-3.



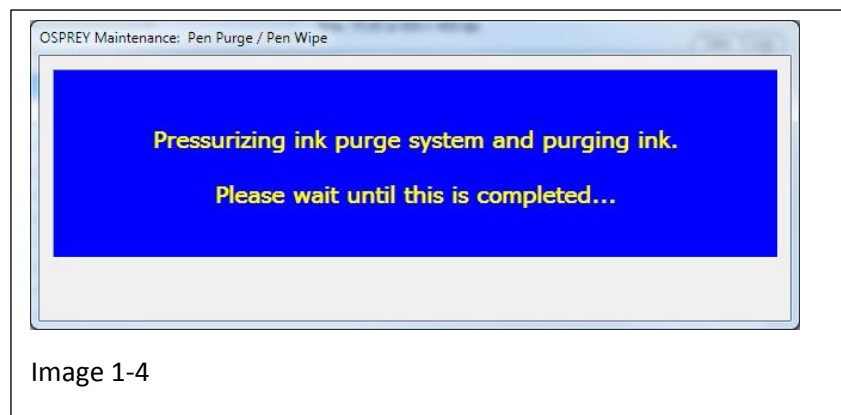


- E. Once inside the Pin Maintenance menu, press the scroll down arrow to select the purge duration time in seconds, see image 1-3. Once a selection has been made press the “Done” button to exit the menu and save the new setting. Now when the Yellow Purge button on the Osprey Print Head is pressed, the purge will last no longer the time set. (Note: Once this setting is made, it will become the default setting every time the Raptor Software runs)

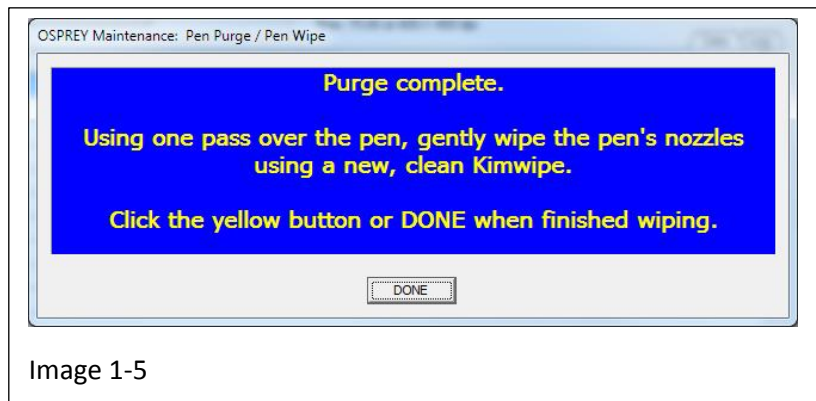
### Step 3

Purge the Print head by performing the following:

- A. Put an ink tray beneath the Osprey Print head before pressing the yellow purge button or if the purge duration is equal to or less than 3 seconds hold a Kimwipe under the pens (**Not Touching the Pens**) and press the yellow purge button on the print head.
- B. Press and hold the Yellow Purge Button down, for approximately one second, on the Osprey Print Head, a blue Dialog box will open on the monitor, see image 1-4. (Note: This will only appear on the screen for a brief moment while the system is actively purging)



- C. Once the system has completed the purge a second dialog box will appear indicating to “gently wipe the pen’s nozzles using a new, clean Kimwipe”, see image 1-5. To close this dialog box you can either press the “Done” button located at the bottom of the box or simply start printing and the box will close automatically.



There are some other features found in the “Special Functions” section of the Osprey Pen Maintenance menu, “Change Ink”, “Ink Fill”, “Flush Fill” and “Empty”

1. Pressing the “Change Ink” button will open a menu to set the cycle time for purging out old ink and refilling with new ink, see image 1-6. (For details to the Change Ink section beginning on page 10.)
2. The Ink Fill button must be pressed before using the print head to charge the pens for use, see image 1-6. (Note: This is not a “Purge” and does not require the use of a Purge Tray, however ink drips may occur so it is advisable to hold a Kimwipe under the pens when performing the function)
3. When the print head is empty the Flush Fill can be used to fill the print head and both tanks with flush, see image 1-6. (This feature is typically used when preparing the system for storage or shipping or changing between compatible ink types)
4. When the Empty button is pressed, holding the Yellow Purge button on the Osprey Print Head will empty the Print Head and both tanks but the fluid will not be refilled. This feature will run for 60 seconds or until the yellow purge button is released, see image 1-6.

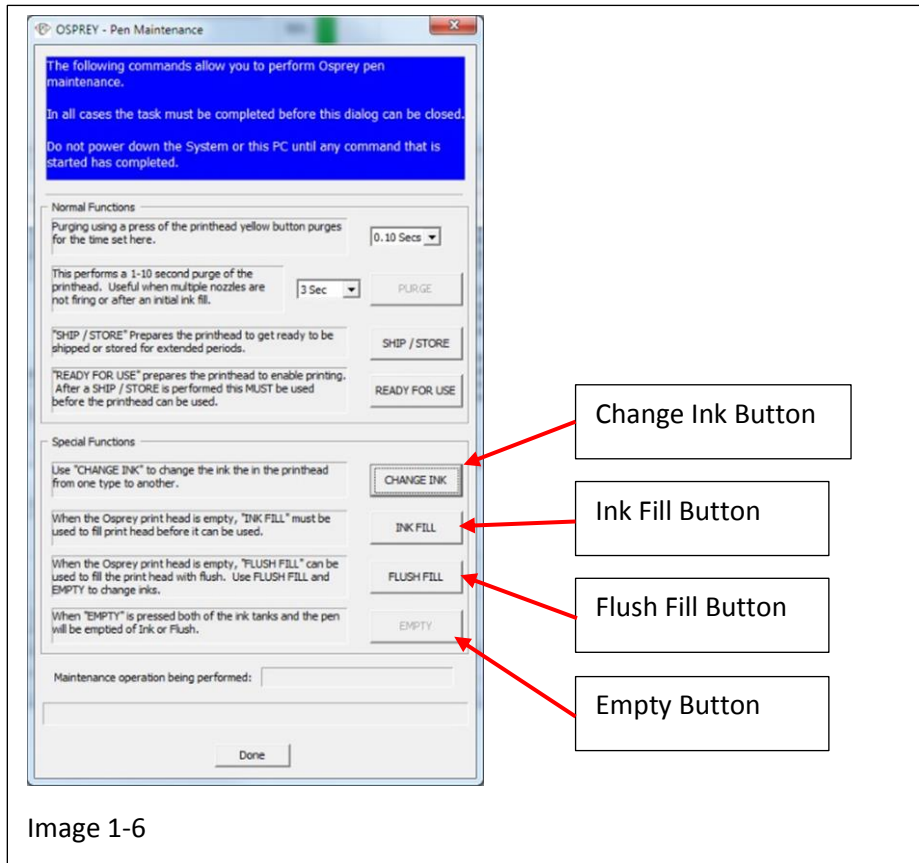


Image 1-6

It should be noted that prior to many of the operations involving the Purge, Ship / Store and Change Ink buttons you may notice a warning dialog box pop up reminding you to place a tray under the print head, see image 1-7. You must press the “Yes” button in order to continue. The “Empty” button has a dialog box with a slightly different appearance, see image 1-8.

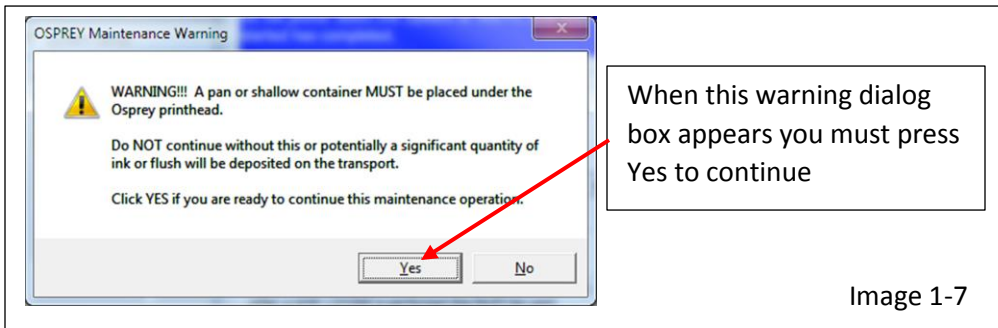


Image 1-7

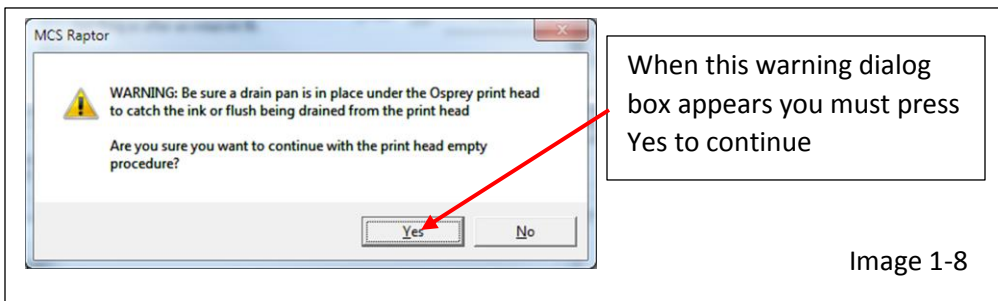


Image 1-8



# **Section Two**

## **Changing Ink**



## Changing the Ink Osprey Print System

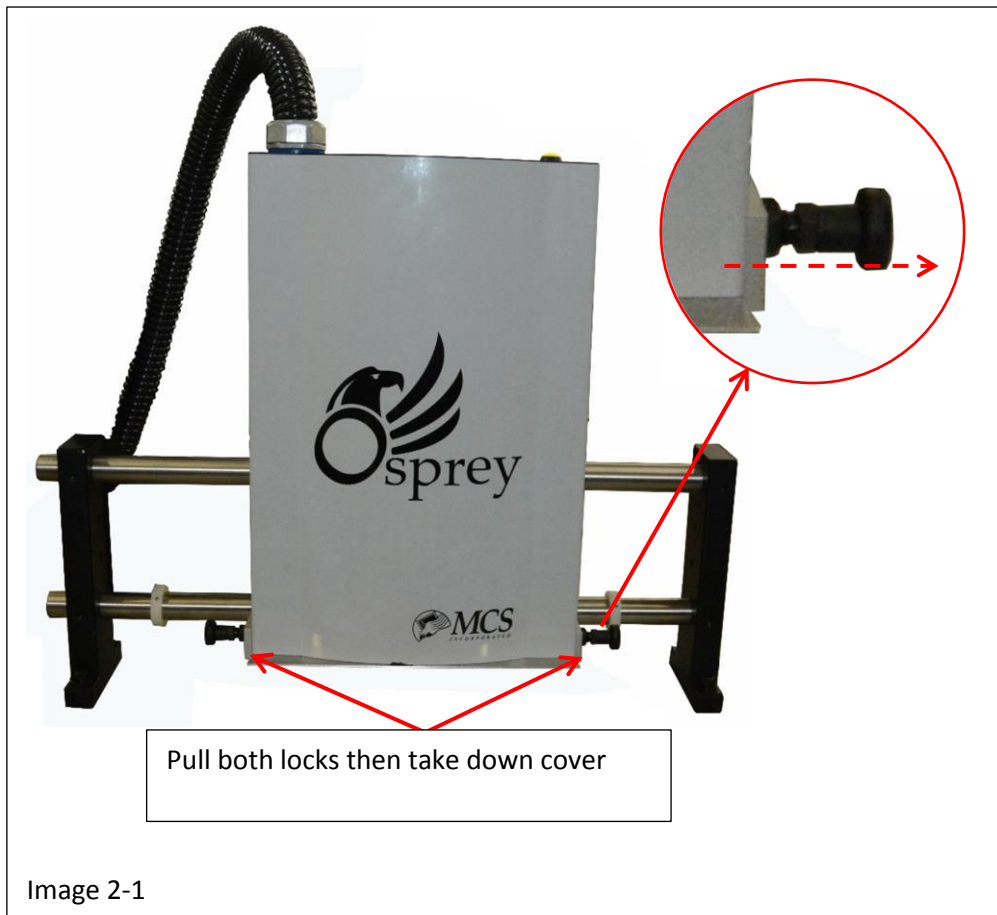
In the event you choose to change to a different type of ink, one that is **“Compatible”** with the Osprey Print System, the “Change Ink” feature in the Osprey Pen Maintenance menu was designed for that task.

To Change the Ink in the Osprey Print System, perform the following steps:

### Step 1

Raise the Print Head and remove the cover in the following manner:

- A. Raise the Osprey Print head to its highest setting by pulling out the lock knob, manually lifting the Osprey Print Head and pushing the lock knob to its original position.
- B. Remove the cover on the bottom in the following manner:
  - B-a. Pull both retaining lock knobs out from the head at the same time
  - B-b. Once the locks are out of the head pull the cover down and away from the head and set the cover aside see image 2-1.
- C. Place a Purge Tray under the Osprey Print Head you intend to select as a precaution to guard against ink dripping onto the belts during this procedure.



## Step 2

Run the Raptor 6 Software and access the Osprey Pen Maintenance menu by performing the following:

- Bring the Raptor 6 Software on line.
- In the Main Menu press File > System >> Setup, to open the System Setup Menu see image 2-2.
- In the "Maintenance" section of the System Setup Menu and high light the "Osprey" Print Head you are priming, see image ( **Warning:** Make sure the purge tray is under the print head selected)

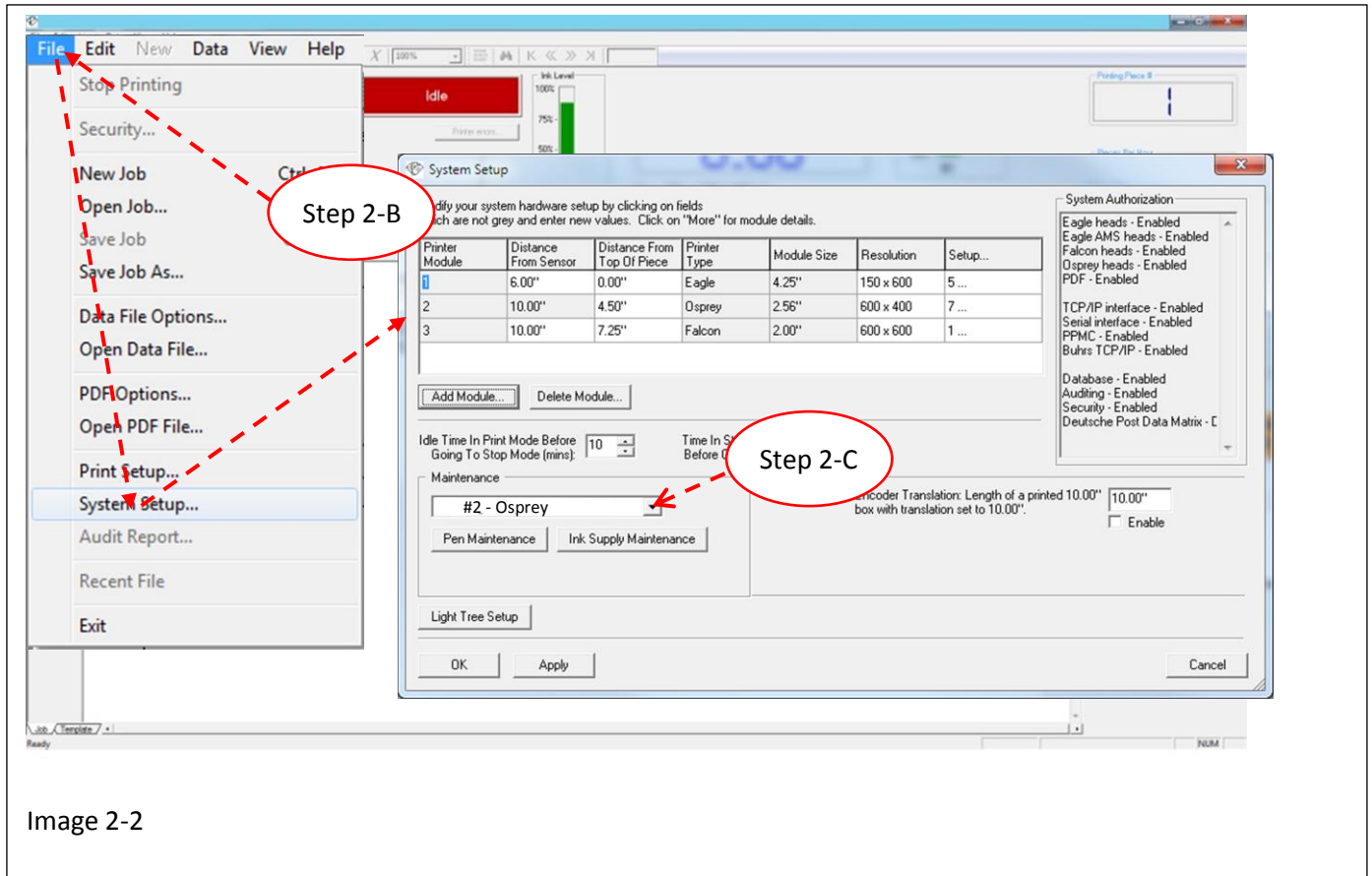
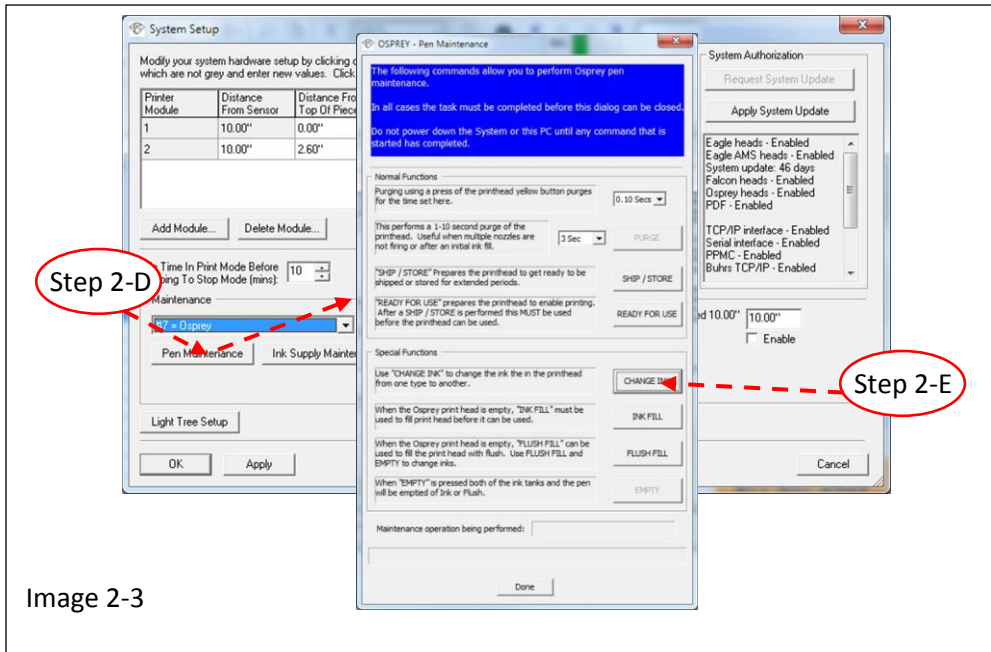
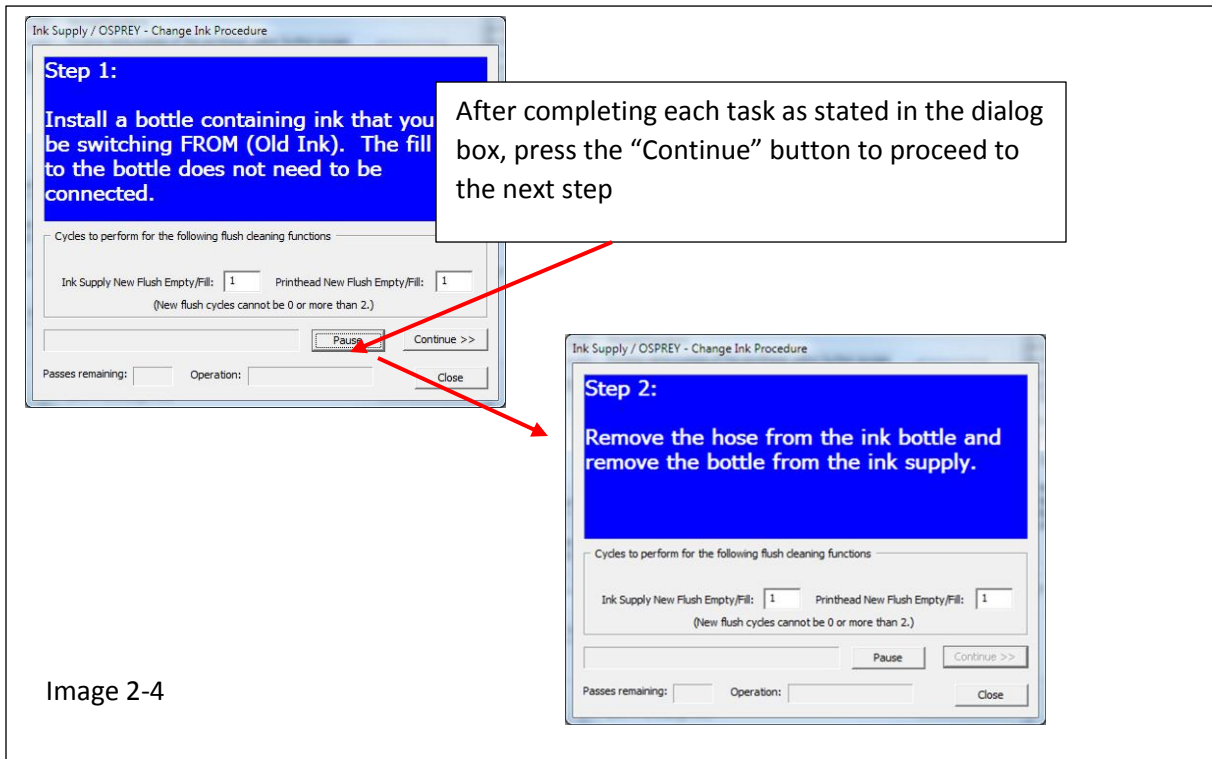


Image 2-2

- D. Once in the Set Up Menu, press the “Pen Maintenance” button to open the Maintenance Menu, see image 2-3
- E. Press the Change Ink button, see image 2-3 to access the “Change Ink” menu. ( **⚠ Warning:** Make sure the purge tray is under the selected print head)



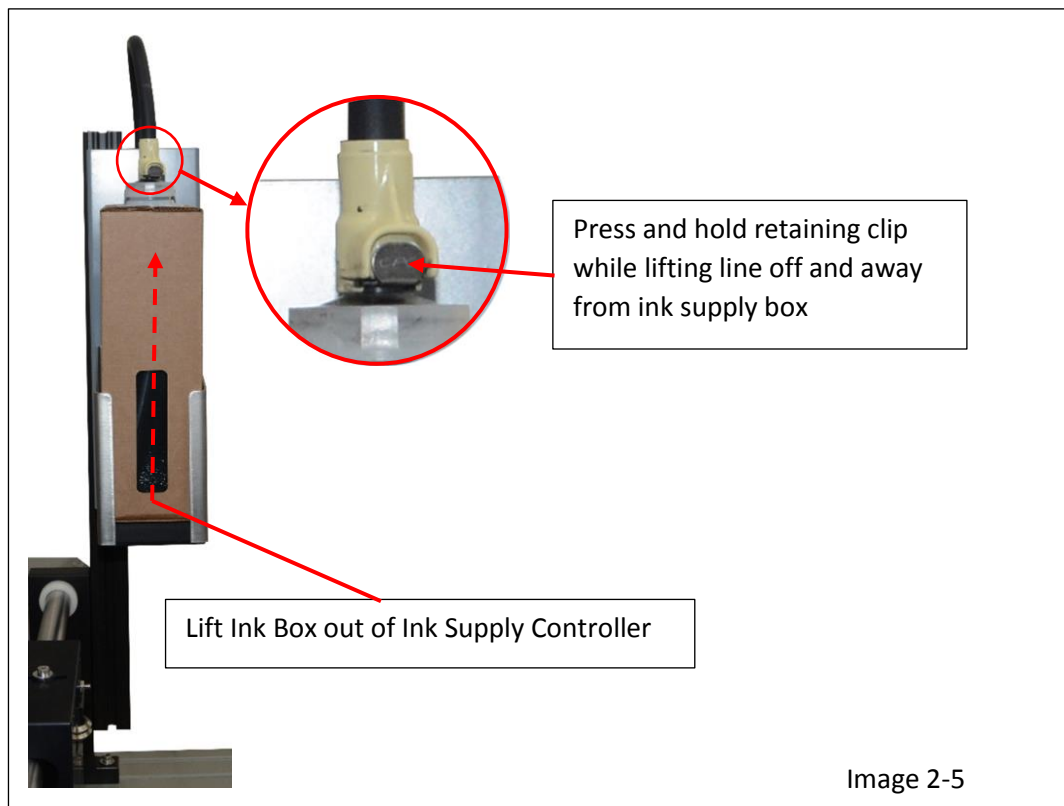
Once the “Change Ink” button has been pressed the “Change Ink” menu will appear. The dialog box at the top of this menu will take you step by step through the entire Ink Changing process. See image 2-4 below for examples of the “Change Ink” menus indicating an action to be performed, after each step press the “Continue button to proceed



For instructions on changing out the Ink and Flush bottles in the Ink Supply

Remove the Ink Bottle from the Ink Supply in the following manner:

- A. Press and hold the retaining clip on the ink supply box, see image 2-5.
- B. Lift the line off and away from the ink bottle.
- C. Remove the ink supply box from the Ink Supply Controller, see image 2-5.  
(Note: Cap the Ink Box once it has been removed)



**Section Three**  
**Prepare the Head**  
**For**  
**Storage**



## Preparing the Osprey Print Head for Storage

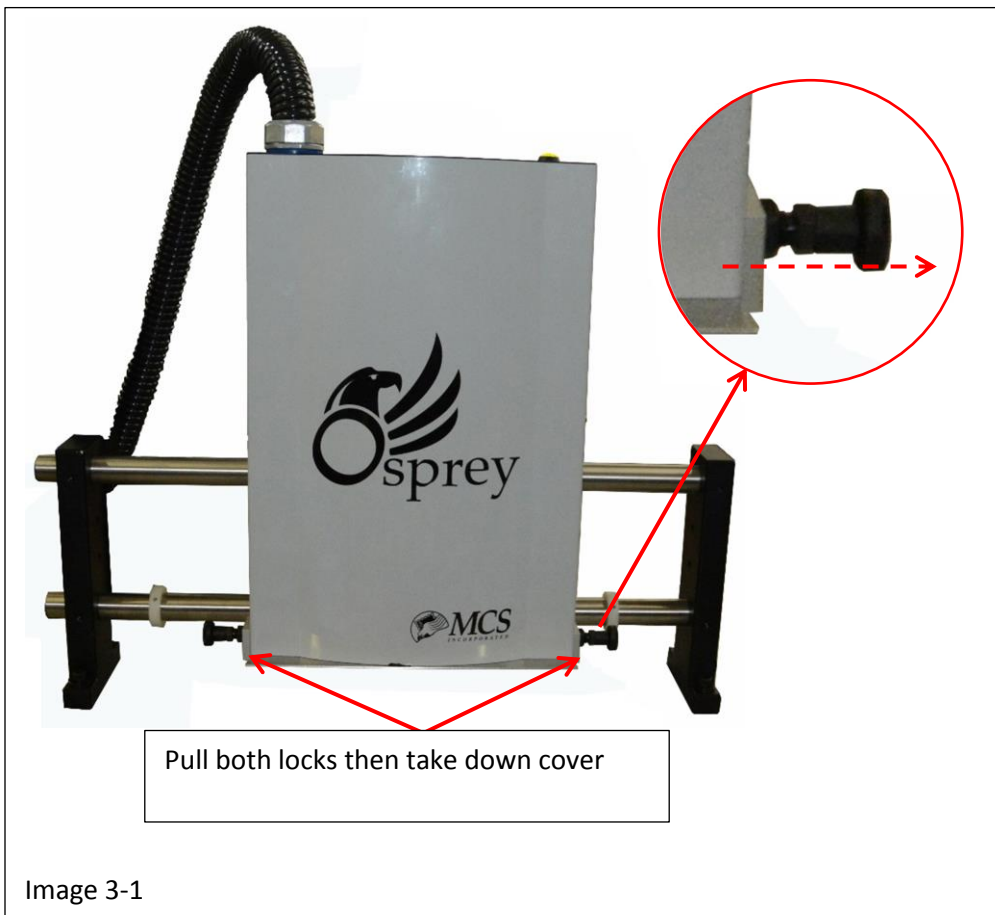
In the event your machine will be disconnected from power for a 90 day time period or more or you plan to ship the machine to another location it should be prepared for storage.

To prepare the Osprey Print Head for storage, perform the following:

### Step 1

Raise the Print Head and remove the cover in the following manner:

- A. Raise the Osprey Print head to its highest setting by pulling out the lock knob, manually lifting the Osprey Print Head and pushing the lock knob to its original position.
- B. If the print head is covered, remove the cover on the bottom in the following manner:
  - b-1. Pull both retaining lock knobs out from the head at the same time
  - b-2. Once the locks are out of the head pull the cover down and away from the head and set the cover aside see image 3-1.
- C. Place a Purge Tray under the Osprey Print Head you intend to select as a precaution to guard against ink dripping onto the belts during this procedure.



## Step 2

Run the Raptor 6 Software and access the Osprey Pen Maintenance menu by performing the following:

- A. Bring the Raptor 6 Software on line.
- B. In the Main Menu press File > System >> Setup, to open the System Setup Menu see image 3-2
- C. Go to the "Maintenance" section of the System Setup Menu and high light the "Osprey" Print Head you are emptying, see image 3-2. Note: This step will have to be repeated for each individual print head you wish to empty. ( **⚠ Warning:** Make sure the purge tray is under the print head selected)

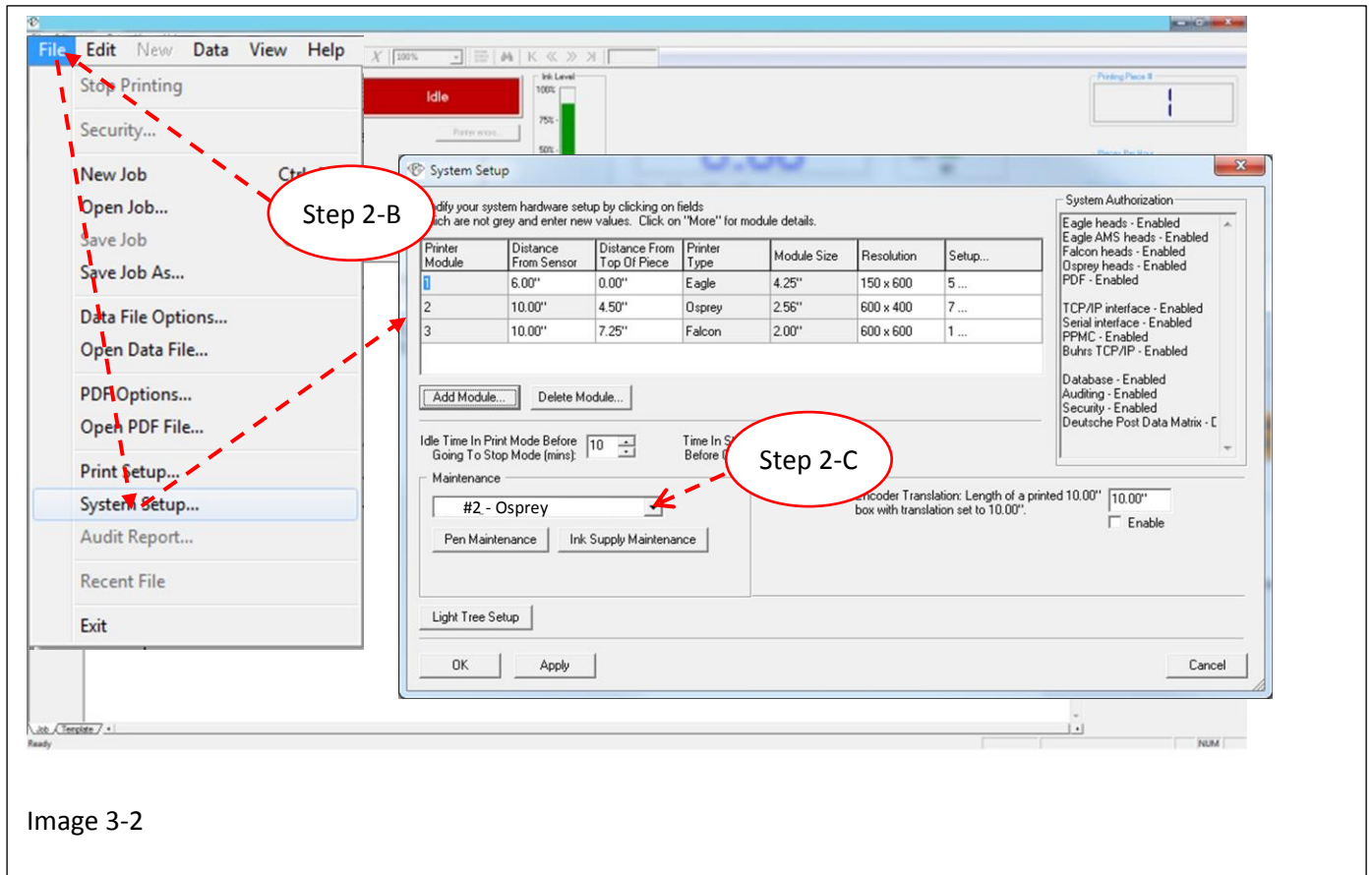


Image 3-2



- D. Once in the Set Up Menu, press the “Pen Maintenance” button to open the Maintenance Menu, see image 3-3
- E. Press the “Ship / Store” button, see image 3-3. ( **⚠ Warning:** Make sure the purge tray is under the selected print head)

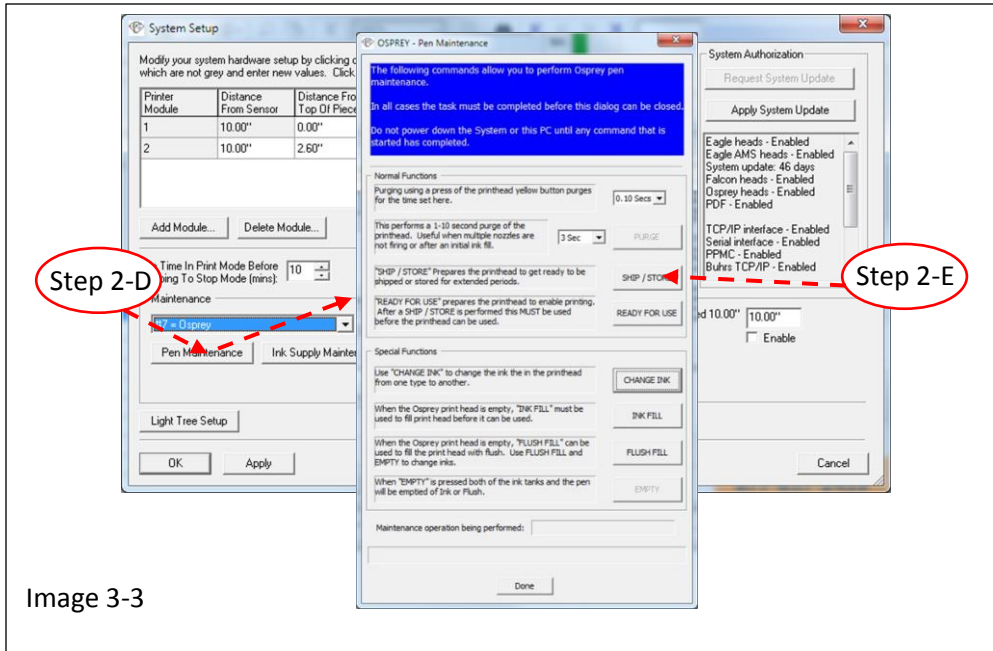


Image 3-3

Once the “Ship / Store” button has been pressed the “Ship / Store” menu will appear. The dialog box at the top of this menu will take you step by step through the entire process for preparing the system for shipping or storage, after each step press the “Continue” button to proceed through all the steps

